

# Balanced Armature Driver



Premium Audio

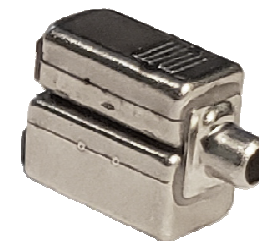
GM-34020-000

Two-Way Driver

Preliminary

## Features

- Exceedingly small two-way driver for premium sound in true wireless earphones
- Excellent treble extension supports HD audio
- Warm bass
- RoHS compliant



## Typical Performance at 1kHz

Impedance	95	Ohms
Sensitivity to 100mV	103	dB SPL
Sensitivity to 1mW	114	dB SPL
Max SPL <sup>a</sup>	119	dB SPL
THD at 94dB SPL	0.4	%
THD at 100dB SPL	0.6	%

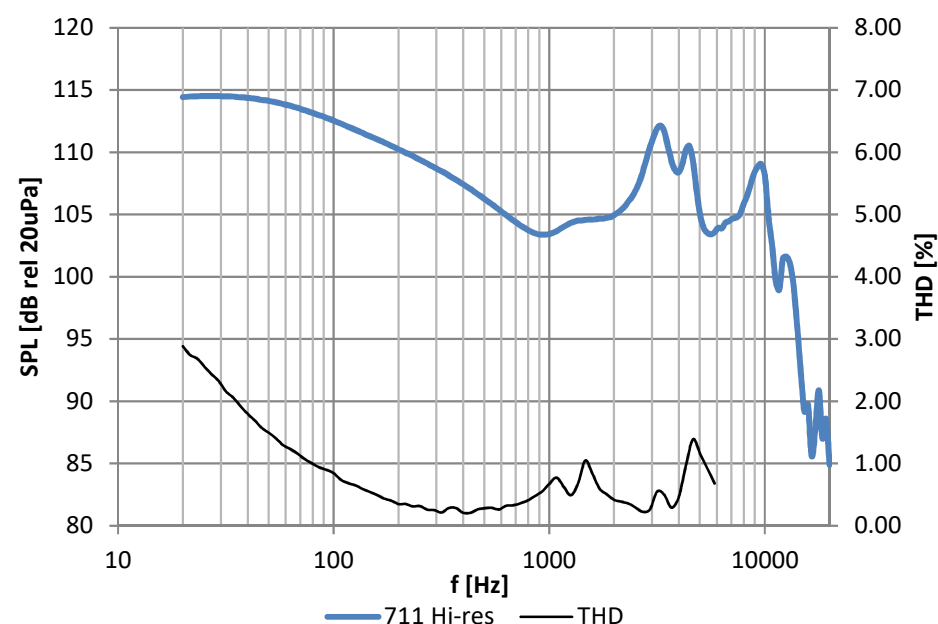
a) SPL at 10% THD

## Testing Condition

using 100mV rms drive signal

- 711 Hi-RES GRAS 403
- THD

## Frequency Response and THD



# Balanced Armature Driver

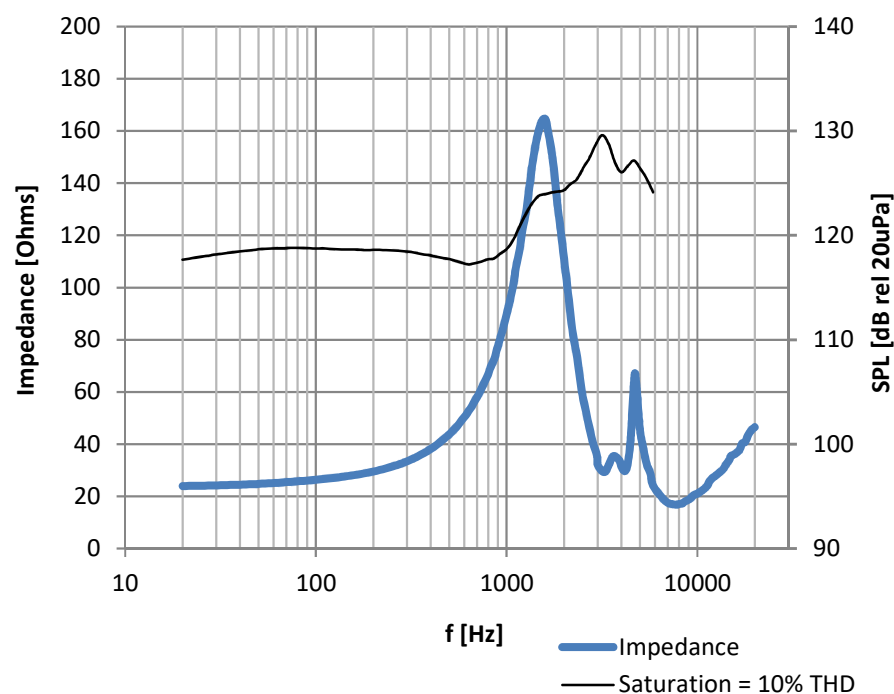
GM-34020-000

Two-Way Driver



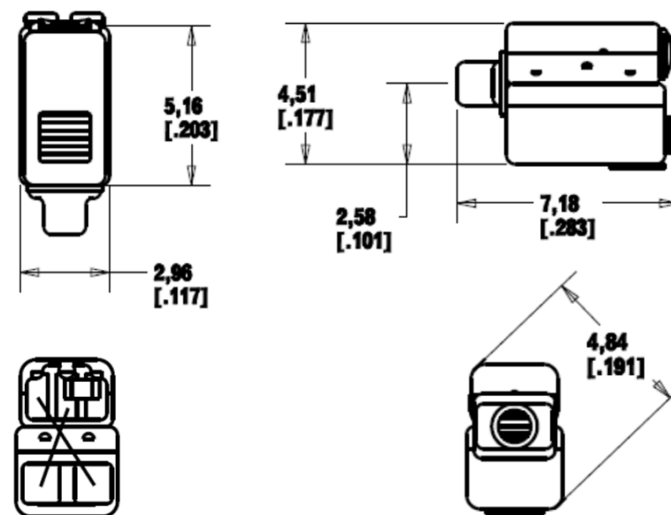
Premium Audio

## Impedance and Saturation SPL



## Outline Drawing

mm (inches)



## Notes

- Ask about custom assembly options (lead wires, customer-specified materials, etc.)
- To prevent heat damage, follow soldering guidelines in application note AN13 (knowles.com)
- Measurement data for reference only. Refer to model specification for full dimensions and performance.